

**RF6600-RGBW REBEL® LED FLOODLIGHT 600W**

Rebel® series is a family of high quality LED Floodlight luminaires which can be used for a variety of commercial and industrial lighting applications. Rebel LED Floodlights are supplied integral LED driver and multi-purpose adjustable trunnion bracket. Typical applications include billboards & signage, area floodlighting, pole lighting, container and shipyards, industrial sites, warehousing, streetlighting, security lighting and more.

**ELECTRICAL PARAMETERS**

Input Voltage:	90-305VAC
Power Consumption:	600W RGB/RGBW
LED Driver Classification:	Meanwell ELG Series
Light Source Classification:	Luxeon® ES LED

**MECHANICAL SPECIFICATIONS**

Minimum IK Rating:	IK10
IP Protection Rating:	IP65
Nominal Dimensions:	811 x 606 x 369mm
Construction Material:	Toughened Alloy Construction
Adjustable Bracket:	180° Adjustable Trunnion Bracket
Recommended Ambient Temp:	-40°C - 50°C

**CONFIGURATION OPTIONS**

- Adjustable mounting bracket included
- 24VDC version available by special request
- Non-standard colours available by special request

**PHOTOMETRIC INFORMATION**

Typical Lumen Efficacy:	75-110lm/W
CCT Colour Temperature:	RGB / RGBW+3000K/4000K
Colour Rendering (Ra):	>70Ra
Beam Angle/Viewing Angle:	15° / 30° / 85° / 135°x85°

**CONTROL OPTIONS****CASAMBI**

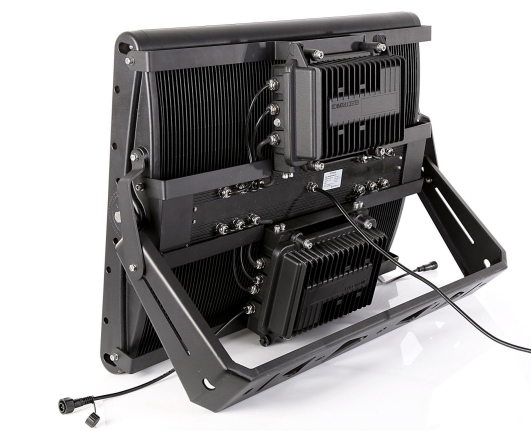
Rebel Floodlight luminaires can accommodate integrated control interfaces suitable for many control options. Typical control options: include DMX512, DALI-2, DT8, Casambi Wireless. Wireless-DMX and other protocols available by request. Optional DALI-2 (DT8).

**COMPLIANCE & CERTIFICATION**

- IESNA2002
- AS/NZS60598, LM79, LM80
- Lifespan: Exceeds 50,000hrs @ L70

**ORDERING INFORMATION**

Model Number:	<b>RF6600</b>
Specify LED CCT:	<b>RGB / RGBW+3000K / RGBW+4000k</b>
Specify Beam Angle:	<b>15° / 30° / 85° / 135°x85°</b>
Specify Finish/Colour:	<b>Black / White / Custom</b>
Input Voltage Option:	<b>90-305VAC or 24VDC Input</b>
Control Option:	<b>DALI DT8/ Casambi Wireless / DMX512</b>



All product details are subject to change without notice. Final specifications may vary.



toll-free: 1300 295 367

email: [mail@industrialight.com.au](mailto:mail@industrialight.com.au)

sales reps:



mobile: 0488 839 917



mobile: 0488 844 503