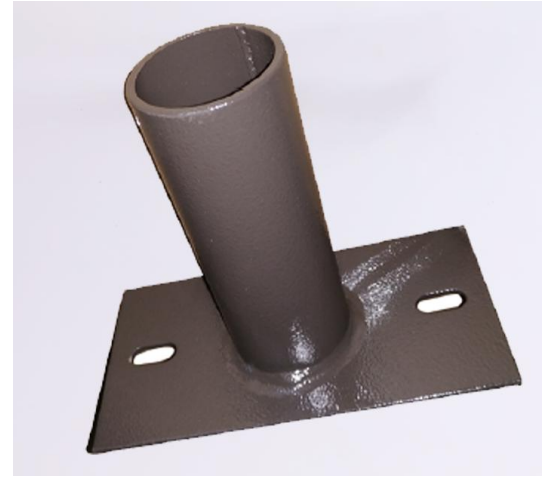
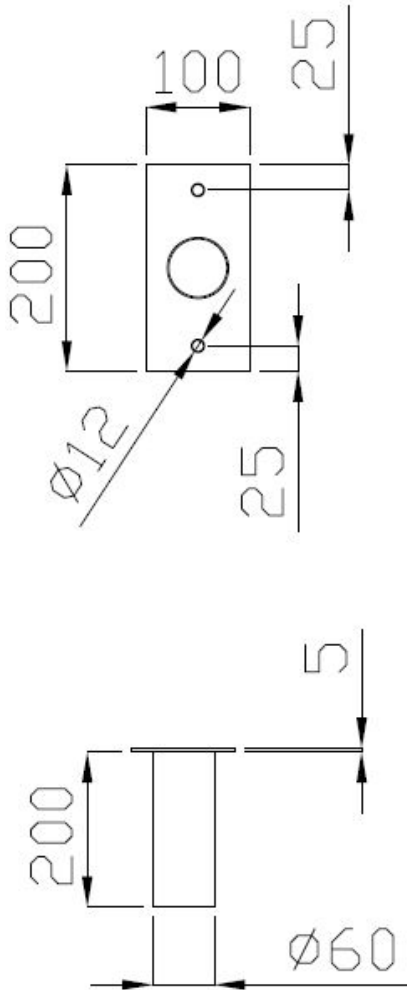


**POLECRAFT® WBS60A WALL BRACKET**

WBS60A is a mounting accessory that allows fixing of pole mounted luminaires to be fixed to a wall or other solid surface. Machine welded and hot dip galvanised (HDG), for corrosion resistance. Available in different size configurations. Available in customised variants or made to order requests. Industrialight can provide engineered solutions for all pole mounted lighting requirements.

**SPECIFICATIONS**

Part Number:	WBS60
Base Plate Dimensions:	200x100mm
Base Plate Thickness:	5mm
Fixing Holes	12mm
Spigot Length:	200mm
Construction Material:	Steel
Surface Treatment:	Hot Dipped Galvanised (HDG)
Surface Finish:	Powdercoated Optional



Specifications are indicative and for reference only. Variable such as local engineering considerations, pole loads and soil conditions should be taken into consideration before specifying. Please consult a suitably qualified engineer for more details on requirements in each case. Industrialight does not accept responsibility for external factors relating to specification of the correct hardware, accessories or lighting pole arrangements for a given site or scenario. All product details are subject to change without notice. Final specifications may vary.