

**PNSP40 LED PINSPOT DOWNLIGHT**

PNSP40 is a discrete LED downlight suitable for joinery & furniture lighting, marine applications, discrete architectural lighting, kitchen & bathroom lighting etc. PNSP40 delivers excellent light output thanks to the powerful integrated high-power LED light source.

**ELECTRICAL PARAMETERS**

Input Voltage:	12VDC
Power Consumption:	6W
LED Driver Classification:	Constant Voltage
Light Source Classification:	CREE CXA

**MECHANICAL SPECIFICATIONS**

Installation Method:	Recessed
IP Protection Rating:	IP44
Overall Trim Diameter:	44mm
Ceiling Cutout:	40mm
Standard Colour/Finish:	Black or White
Recommended Ambient Temp:	-15°C - 55°C

**CONFIGURATION OPTIONS**

- Non standard colours available by special request
- DALI dimmable LED driver available by request

**PHOTOMETRIC INFORMATION**

Typical Lumen Efficacy:	110lm/W
CCT Colour Temperature:	2700K / 3000K / 4000K / 6500K
Colour Rendering (Ra):	>90Ra
Beam Angle/Viewing Angle:	30° or 60°

**Control Options**

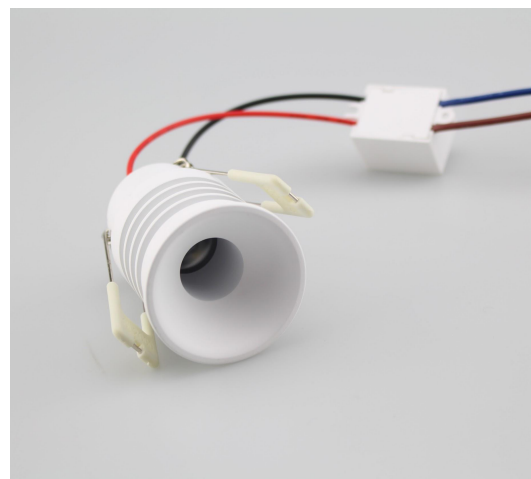
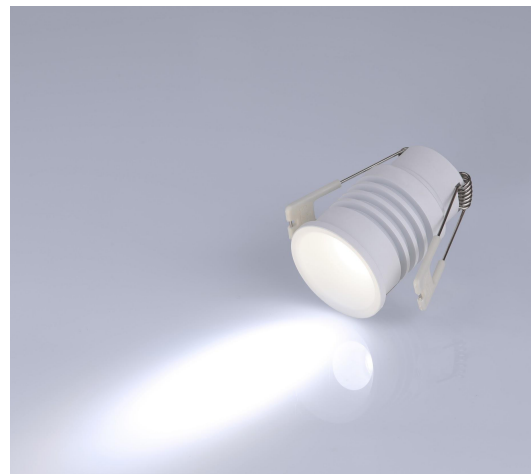
This product can be customised or configured according to the needs of your project. Dimming and control options are available by special request. Control protocols include DALI, Casambi, Wireless, 1-10V, analogue dimming.

**COMPLIANCE & CERTIFICATION**

- IESNA2002
- AS/NZS60598, LM79, LM80
- Lifespan: Exceeds 50,000hrs @ L70

**ORDERING INFORMATION**

Model Number:	<b>PNSP40</b>
Specify LED CCT:	<b>2700K / 3000K / 4000K / 6500K</b>
Specify Beam Angle:	<b>30° / 60°</b>
Specify Finish/Colour:	<b>Black or White</b>
Input Voltage Option:	<b>12VDC / 240VAC</b>
Dimming Options:	<b>Non Dimmable / DALI / Phase Dimmable</b>



All product details are subject to change without notice. Final specifications may vary.