

NP300P NEPTUNE LED BUNKER

Neptune is a strong impact resistant light fitting featuring a professional LED light source and integral constant current LED driver. NP300 is also available in several sizes and a variety of fascia designs including eyelid and grille options. Typical applications include mining & industrial sites, government projects, education facilities, other commercial and industrial projects.

ELECTRICAL PARAMETERS

Input Voltage:	220-240VAC
Power Consumption:	9W / 24W / 46W
LED Driver Classification:	Integral Constant Current
Light Source Classification:	OEM SMD2835

**MECHANICAL SPECIFICATIONS**

Minimum IK Rating:	IK08 / IK10
IP Protection Rating:	IP65
Nominal Dimensions:	130mm / 265mm / 360mm
Construction Material:	Die Cast Aluminium
Standard Colour/Finish:	Corrosion Resistant
Recommended Ambient Temp:	-20°C - 55°C

**CONFIGURATION OPTIONS**

- Also available with grille or eyelid fascia version
- Non standard colours available by special request
- DALI dimmable LED driver available by request

PHOTOMETRIC INFORMATION

Typical Lumen Efficacy:	90lm/W
CCT Colour Temperature:	3000K / 4000K / 6500K
Colour Rendering (Ra):	>85Ra
Beam Angle/Viewing Angle:	120°

**CONTROL OPTIONS**

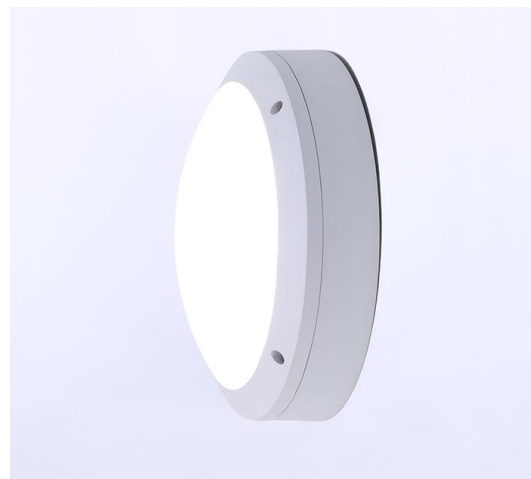
This product can be customised or configured according to the needs of your project. Dimming and control options are available by special request. Control protocols include DALI, Casambi, Wireless, 1-10V, analogue dimming.

COMPLIANCE & CERTIFICATION

- IESNA2002
- AS/NZS60598, LM79, LM80
- Lifespan: Exceeds 50,000hrs @ L70

CASAMBI**ORDERING INFORMATION**

Model Number:	NP300P
Specify LED CCT:	3000K / 4000K / 6500K
Facia Version:	Plain Opal
Size Configuration:	130mm / 265mm / 360mm
Wattage Option:	9W / 24W / 46W
Control Option:	Non Dimmable / DALI / 1-10V / Casambi



All product details are subject to change without notice. Final specifications may vary.