

## MTR448 INGROUND PATHWAY LIGHT

MTR448 is a compact luminaire designed for inground installation in pathways and landscaped areas. MTR448 is manufactured from toughened materials for strong impact resistance, and incorporates a professional LED light source for maximum efficiency.

### ELECTRICAL PARAMETERS

Input Voltage:	220-240VAC
Power Consumption:	3W
LED Driver Classification:	Integral LED Driver
Light Source Classification:	Edison LED

### MECHANICAL SPECIFICATIONS

Minimum IK Rating:	IK10	 DIMMING OPTIONAL
IP Protection Rating:	IP67	
Overall Diameter:	100mm	
Overall Mounting Depth:	107.5mm	
Construction Material:	ADC Die Cast Aluminum	
Standard Colour/Finish:	Dark Grey	
Recommended Ambient Temp:	20°C - 50°C	

### CONFIGURATION OPTIONS

- One-way, two-way, three-way versions also available
- Non standard colours available by special request

### PHOTOMETRIC INFORMATION

Typical Lumen Efficacy:	85lm/W
CCT Colour Temperature:	3000K / 4000K / 6000K
Colour Rendering (Ra):	>80Ra
Beam Angle/Viewing Angle:	110°



### CONTROL OPTIONS

This product can be customised or configured according to the needs of your project. Dimming and control options are available by special request. Control protocols include DALI, Casambi, Wireless, 1-10V, analogue dimming.

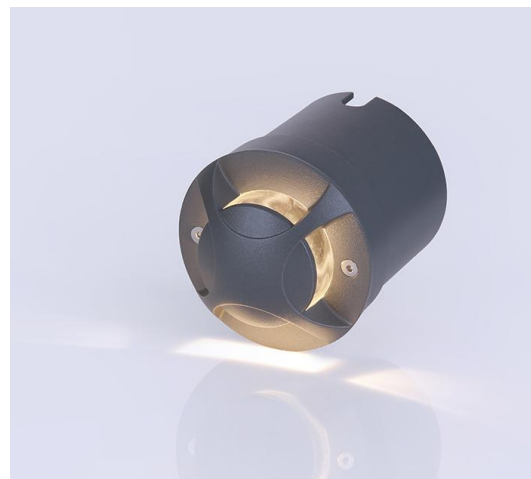
### COMPLIANCE & CERTIFICATION

- IESNA2002
- AS/NZS60598, LM79, LM80
- Lifespan: Exceeds 50,000hrs @ L70



### ORDERING INFORMATION

Model Number:	<b>MTR448</b>
Specify LED CCT:	<b>3000K / 4000K / 6000K</b>
Specify Input Voltage:	<b>220-240VAC / 12VDC</b>
Specify Finish/Colour:	<b>Dark Grey / Black / White / Custom</b>
Included Accessory:	<b>Inground Housing (included)</b>
Dimming Option:	<b>Non Dimmable / DALI / Phase / Casambi</b>



All product details are subject to change without notice. Final specifications may vary.