

MTR438 INGROUND PATHWAY LIGHT

MTR438 is a compact luminaire designed for inground installation in pathways and landscaped areas. MTR438 is manufactured from toughened materials for strong impact resistance, and incorporates a professional LED light source for maximum efficiency.

ELECTRICAL PARAMETERS

Input Voltage:	220-240VAC
Power Consumption:	3W
LED Driver Classification:	Integral LED Driver
Light Source Classification:	Edison LED

MECHANICAL SPECIFICATIONS

Minimum IK Rating:	IK10	 DIMMING OPTIONAL
IP Protection Rating:	IP67	
Overall Diameter:	100mm	
Overall Mounting Depth:	107.5mm	
Construction Material:	ADC Die Cast Aluminum	
Standard Colour/Finish:	Dark Grey	
Recommended Ambient Temp:	20°C - 50°C	

CONFIGURATION OPTIONS

- One-way, two-way, four-way versions also available
- Non standard colours available by special request

PHOTOMETRIC INFORMATION

Typical Lumen Efficacy:	85lm/W
CCT Colour Temperature:	3000K / 4000K / 6000K
Colour Rendering (Ra):	>80Ra
Beam Angle/Viewing Angle:	110°

**CONTROL OPTIONS**

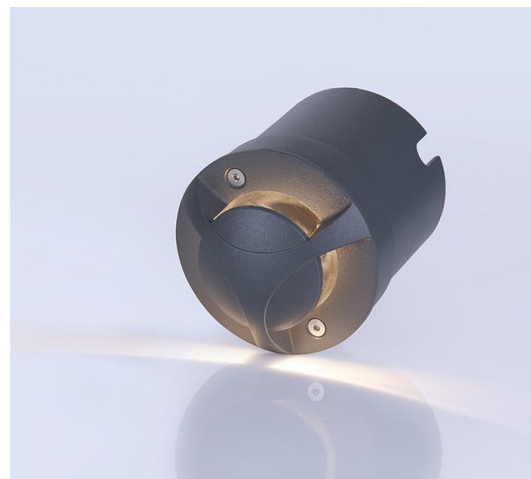
This product can be customised or configured according to the needs of your project. Dimming and control options are available by special request. Control protocols include DALI, Casambi, Wireless, 1-10V, analogue dimming.

COMPLIANCE & CERTIFICATION

- IESNA2002
- AS/NZS60598, LM79, LM80
- Lifespan: Exceeds 50,000hrs @ L70

**ORDERING INFORMATION**

Model Number:	MTR438
Specify LED CCT:	3000K / 4000K / 6000K
Specify Input Voltage:	220-240VAC / 12VDC
Specify Finish/Colour:	Dark Grey / Black / White / Custom
Included Accessory:	Inground Housing (included)
Dimming Option:	Non Dimmable / DALI / Phase / Casambi



All product details are subject to change without notice. Final specifications may vary.