

**IL6062 LED LANDSCAPE BOLLARD LUMINAIRE**

IL6062 LED is a high-quality LED bollard luminaire for landscape lighting applications. The fitting is constructed from quality materials and incorporates new generation LED light source with advanced efficiency and optical performance and is available in different colour finishes, and is suited for any commercial or residential application.

**ELECTRICAL PARAMETERS**

Input Voltage:	100-240VAC
Power Consumption:	10W
LED Driver Classification:	Integral Constant Current
Light Source Classification:	High Power COB LED

**MECHANICAL SPECIFICATIONS**

Minimum IK Rating:	IK09
IP Protection Rating:	IP64
Profile Dimensions:	120x50mm
Construction Material:	Extruded Aluminium
Standard Colour/Finish:	Corrosion Resistant
Recommended Ambient Temp:	-15°C - 45°C

**CONFIGURATION OPTIONS**

- Non standard colours available by special request
- Optional 24VDC constant voltage version by request

**PHOTOMETRIC INFORMATION**

Typical Lumen Efficacy:	100lm/w
CCT Colour Temperature:	3000K / 4000K / 6500K
Colour Rendering (Ra):	>80Ra
Beam Angle/Viewing Angle:	110°

**CONTROL OPTIONS**

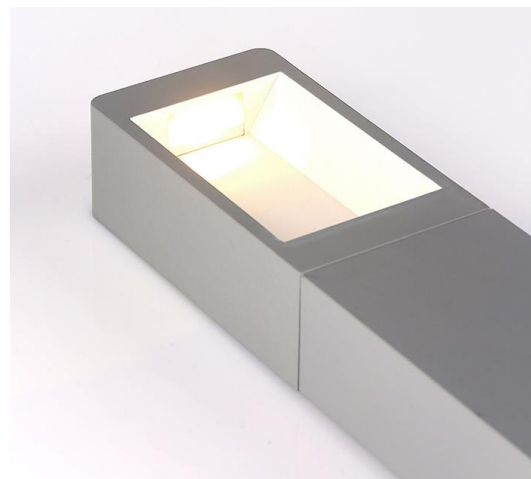
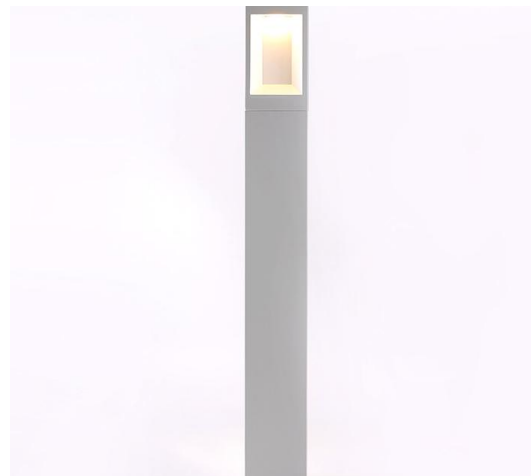
This product can be customised or configured according to the needs of your project. Dimming and control options are available by special request. Control protocols include DALI, Casambi, Wireless, 1-10V, analogue dimming.

**COMPLIANCE & CERTIFICATION**

- IESNA2002
- AS/NZS60598, LM79, LM80
- Lifespan: Exceeds 50,000hrs @ L70

**ORDERING INFORMATION**

Model Number:	<b>IL6062</b>
Specify LED CCT:	<b>2700K / 3000K / 4000K / 6500K</b>
Specify Wattage:	<b>10W</b>
Specify Finish/Colour:	<b>Dark Charcoal / Opal Grey</b>
Input Voltage Option:	<b>100-240VAC / 12VDC / 24VDC</b>
Dimming Options:	<b>Non Dimmable / DALI / Casambi</b>



All product details are subject to change without notice. Final specifications may vary.