

FL109 LED FLOODLIGHT LUMINAIRE

FL109 is an architectural LED Floodlight with marine-grade corrosion resistant finish. The integrated LED light source is swivel adjustable which provides effective illumination and task lighting of specific features. FL109 is available with wide flood or focus optics and has versatile mounting options.

ELECTRICAL PARAMETERS

Input Voltage:	100-240VAC
Power Consumption:	10W
LED Driver Classification:	Integral PSU LED Driver
Light Source Classification:	SMD ELID50



MECHANICAL SPECIFICATIONS

Minimum IK Rating:	IK10
IP Protection Rating:	IP65
Nominal Dimensions:	134x152x56mm
Construction Material:	Die Cast Aluminium
Standard Colour/Finish:	Dark Grey / Black / White
Recommended Ambient Temp:	-20°C - 50°C



CONFIGURATION OPTIONS

- Non standard colours available by special request
- Garden spike mounting accessory available by request

PHOTOMETRIC INFORMATION

Typical Lumen Efficacy:	90lm/w
CCT Colour Temperature:	3000K / 4000K / 6500K
Colour Rendering (Ra):	>80Ra
Beam Angle/Viewing Angle:	10° / 25° / 120°

CONFIGURATION OPTIONS



This product can be customised or configured according to the needs of your project. Dimming and control options are available by special request. Control protocols include DALI, Casambi, Wireless, 1-10V, analogue dimming.

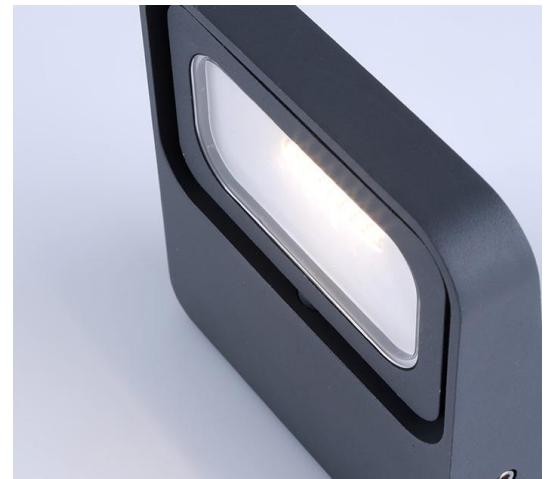


COMPLIANCE & CERTIFICATION

- IESNA2002
- AS/NZS60598, LM79, LM80
- Lifespan: Exceeds 50,000hrs @ L70

ORDERING INFORMATION

Model Number:	FL109
Specify LED CCT:	3000K / 4000K / 6500K
Specify Beam Angle:	10° / 25° / 120°
Specify Finish/Colour:	Dark Grey / Black / White
Input Voltage Option:	100-240VAC / 12VDC / 24VDC
Dimming Option:	Non Dimmable / DALI / Casambi



All product details are subject to change without notice. Final specifications may vary.