



EXD930P60 MODULAR EXD FLOODLIGHT

EXD930 is a pole mounted industrial luminaire for use in hazardous locations. Ideal for car parking, work areas, depots, streetlighting and other pole mounted applications. Ideal for Oil refineries, exploration sites, chemical industries, power plants and more. Strong protection against corrosion and harsh chemicals.

ELECTRICAL PARAMETERS

Input Voltage:	120-277VAC
Rated Frequency:	50Hz / 60Hz
Power Consumption:	30W / 60W
LED Driver Classification:	Integral, Constant Current
Light Source Classification:	CREE High Power LED
Zone Classification:	Zone 1 / Zone 2 / Zone 21 / Zone 22
Gas Explosive Group:	Group IIA, IIB, IIC

MECHANICAL SPECIFICATIONS

Minimum IK Rating:	IK10	
IP Protection Rating:	IP66	
Body Dimensions:	248(L)x305(W)x93mm(H)	
Construction Material:	Powdercoated Aluminium	
Standard Colour/Finish:	Grey / Signal Yellow	
Recommended Ambient Temp:	-40°C to 55°C	
Net Weight:	5.0Kg	
Spigot Entry:	Φ55~Φ60	

CONFIGURATION OPTIONS

- Suitable for Pole Spigot 60mm OD / 40-55mm OD By Request
- Compliant with Temperature group T1- T6
- Exd Rated Junction Box and Accessories available by request

PHOTOMETRIC INFORMATION

Typical Lumen Efficacy:	125lm/W
CCT Colour Temperature:	3000K / 4000K / 5000K
Colour Rendering (Ra):	>70Ra / 80Ra
Beam Angle/Viewing Angle:	60° x 80°

COMPLIANCE & CERTIFICATION

- IESNA2002, AS/NZS60598, LM79, LM80
- Lifespan: Exceeds 90,000hrs @ L70
- Ex Clas: Ex tb IIIC T95°C Db Ex db e IIC T5 Gb
- ATEX Certification: SEV 21 ATEX0500X
- IECEx Certification: IECEX SEV 21.0002X

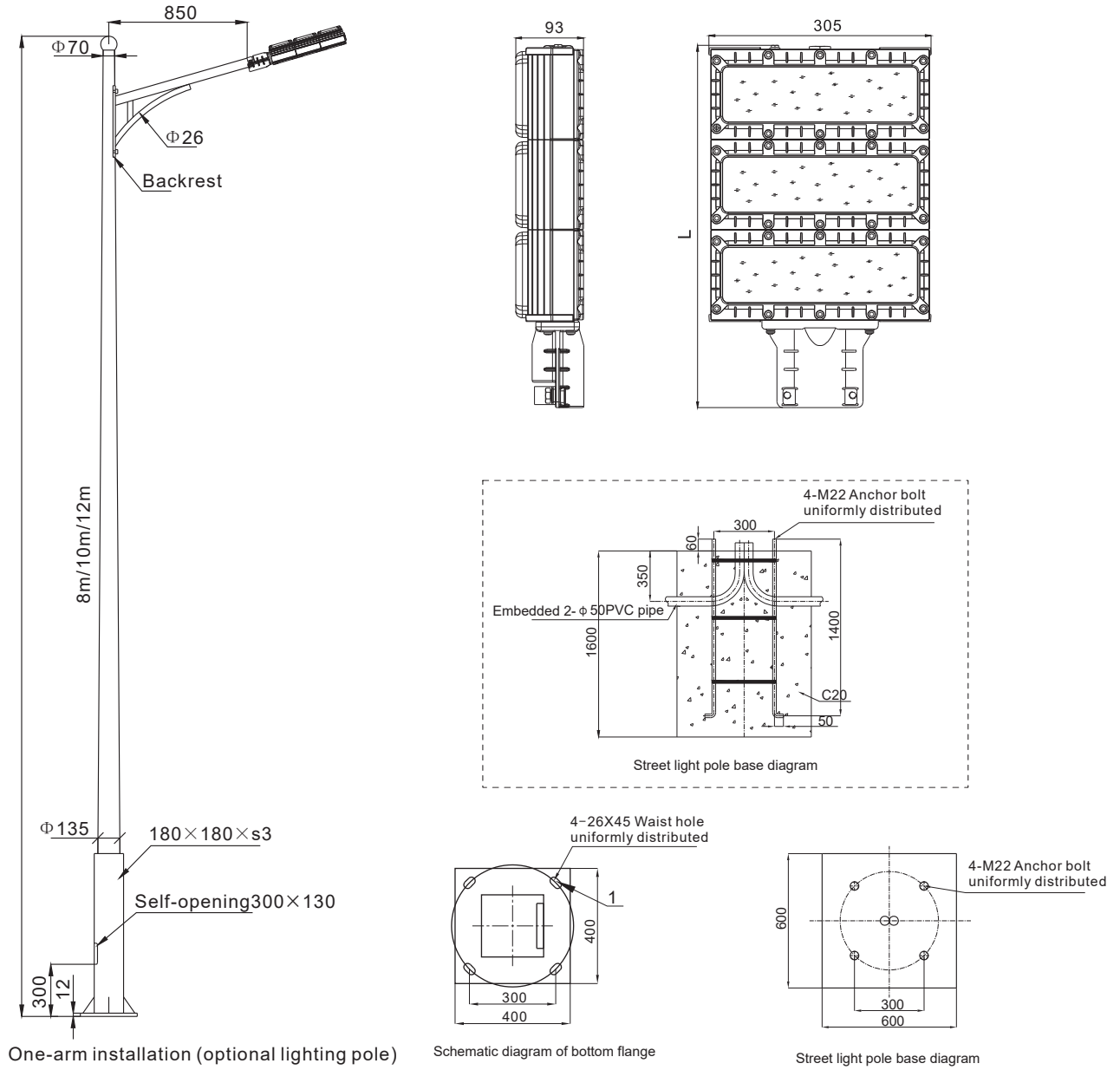
ORDERING INFORMATION

Model Number:	EXD930P60
Pole Spigot Entry:	Φ55~Φ60 / Φ40~Φ50
Specify Wattage:	30W / 60W
CCT:	3000K / 4000K / 5000K
Input Voltage Option:	90-265VAC or 24VDC
Specify Colour:	Grey / Signal Yellow



All product details are subject to change without notice. Final specifications may vary.

EXD930P - DIMENSIONS

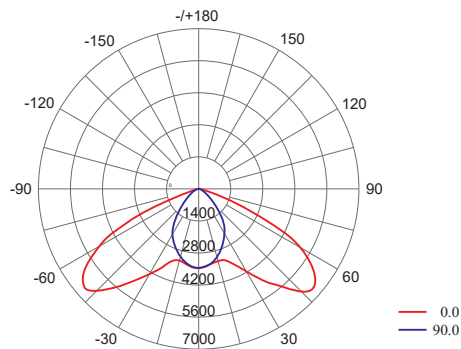


One-arm installation (optional lighting pole)

Schematic diagram of bottom flange

Street light pole base diagram

EXD930P - PHOTOMETRIC



All product details are subject to change without notice. Final specifications may vary.

Unit: mm