



EXD900E EXPLOSION PROOF LED FLOODLIGHT

EXD900E is an industrial grade multi-purpose explosion proof LED floodlight luminaire designed for general purpose lighting in mining & gas sites, petroleum transfer facilities, chemical plants and other demanding industrial environments. EXD900E is optionally available with emergency battery backup configuration

ELECTRICAL PARAMETERS

Input Voltage:	90-305VAC
Power Consumption:	25W / 40W / 60W / 80W
LED Driver Classification:	Integral, Constant Current
Light Source Classification:	Cree High Power LED
Zone Classification:	Zone 1 / Zone 2 / Zone 21 / Zone 22
Exd Classification:	Ex.de II B T6 Gb


MECHANICAL SPECIFICATIONS

Minimum IK Rating:	IK08	
IP Protection Rating:	IP66	
Nominal Dimensions:	326(W)x370(H)mm	
Construction Material:	Powdercoated Aluminium	
Standard Colour/Finish:	Signal Yellow	
Recommended Ambient Temp:	-40°C to 55°C	

CONFIGURATION OPTIONS

- Supplied with adjustable mounting bracket
- Emergency battery backup option available

PHOTOMETRIC INFORMATION

Typical Lumen Efficacy:	110lm/W	
CCT Colour Temperature:	6500K	
Colour Rendering (Ra):	>75Ra	
Beam Angle/Viewing Angle:	125° / 90x110°	

CUSTOM OPTIONS

Hazardous area lighting systems can be configured according to the needs of your project. Control options are available by special request. Control protocols include DALI, Casambi Wireless, Automation & Sensor Detection.

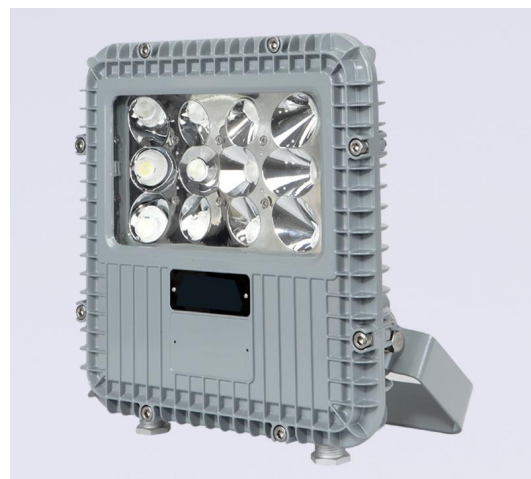
COMPLIANCE & CERTIFICATION



- IESNA2002, AS/NZS60598, LM79, LM80
- Lifespan: Exceeds 50,000hrs @ L70
- Ex Classification: Ex.de II B T6 Gb
- ATEX Certification INERIS 13ATEX0062X
- IECEx Certification: IECEX INE 15.0019X

ORDERING INFORMATION

Model Number:	EXD900E
Specify LED CCT:	6500K
Specify Wattage:	25W / 40W / 60W / 80W
Emergency Version:	EXM910K (Maintained or non-maintained)
Input Voltage Option:	90-265VAC or 24VDC
Control Options:	DALI / Wireless (Optional)



All product details are subject to change without notice. Final specifications may vary.