

ATR4200 LED CANOPY LUMINAIRE

ATR4200 is an industrial grade commercial luminaire for ceiling and canopy lighting. The uniquely designed housing ensures optimum thermal management for the integrated LED module. It is easy to install and can be used for any industrial or commercial project. Typical applications include carparks, petrol stations, warehouses etc.

ELECTRICAL PARAMETERS

Input Voltage:	100-260VAC
Power Consumption:	200W
LED Driver Classification:	Integral Constant Current
Light Source Classification:	Epistar SMD



MECHANICAL SPECIFICATIONS

Minimum IK Rating:	IK10	
IP Protection Rating:	IP65	
Dimensions:	580x580x125mm	
Construction Material:	Die Cast Aluminum	
Standard Colour/Finish:	Corrosion Resistant Surface	
Recommended Ambient Temp:	20°C - 50°C	

KEY FEATURES

- Non standard colours available by special request
- DALI dimmable LED driver available by request

PHOTOMETRIC INFORMATION

Typical Lumen Efficacy:	100lm/W
CCT Colour Temperature:	3000K / 4000K / 6500K
Colour Rendering (Ra):	>80Ra
Beam Angle/Viewing Angle:	110°



CONTROL OPTIONS

ATR series customised or configured according to the needs of your project. Colour can be refinished. Dimming and control options are available by special request. Control protocols include DALI, Casambi, Wireless, 1-10V. Can be configured for sensor automation by request

COMPLIANCE & CERTIFICATION

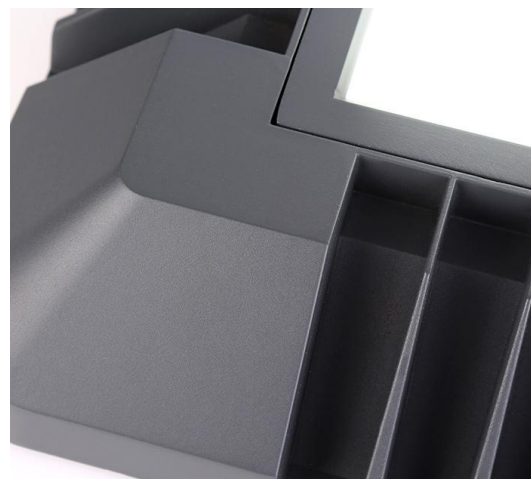
- IESNA2002
- AS/NZS60598, LM79, LM80
- Lifespan: Exceeds 50,000hrs @ L70

CASAMBI



ORDERING INFORMATION

Model Number:	ATR4200
Specify LED CCT:	3000K / 4000K / 6500K
Specify Wattage:	50W
Specify Colour/Finish:	Dark Anthracite /V=Black / White
Input Voltage Option:	100-260VAC / 24VDC
Dimming Option:	Non-Dimmable / DALI / 1-10V
Wireless & Sensor Options:	Wireless control / Sensor Operation



All product details are subject to change without notice. Final specifications may vary.